

ARNAUD LEMAIRE

# Cobber

JULY 25



ARNAUD  
LEMAIRE

BY  
ARNALDO  
ANAYA-LUCCA

HEIGHT 186 CM / 6'11.5" | CHEST 92 CM / 36" | WAIST 77 / 30.5 | HIPS 95 CM / 37.5" | HAIR BLONDE | EYES BLUE  
SHOES 43 / 9.5-10 | SUIT 48 / 38 | COLLAR 39 / 15.5

wiener  
models  
A KULT AGENCY

# ARNAUD LEMAIRE



HEIGHT 186 CM / 6'11.5" | CHEST 92 CM / 36" | WAIST 77 / 30.5 | HIPS 95 CM / 37.5" | HAIR BLONDE | EYES BLUE  
SHOES 43 / 9.5-10 | SUIT 48 / 38 | COLLAR 39 / 15.5

wiener  
models  
A KULT AGENCY



# ARNAUD LEMAIRE



HEIGHT 186 CM / 6'11.5" | CHEST 92 CM / 36" | WAIST 77 / 30.5 | HIPS 95 CM / 37.5" | HAIR BLONDE | EYES BLUE  
SHOES 43 / 9.5-10 | SUIT 48 / 38 | COLLAR 39 / 15.5

wiener  
models  
A KULT AGENCY

# ARNAUD LEMAIRE



HEIGHT 186 CM / 6'11.5" | CHEST 92 CM / 36" | WAIST 77 / 30.5 | HIPS 95 CM / 37.5" | HAIR BLONDE | EYES BLUE  
SHOES 43 / 9.5-10 | SUIT 48 / 38 | COLLAR 39 / 15.5

wiener  
models  
A KULT AGENCY



# ARNAUD LEMAIRE



HEIGHT 186 CM / 6'11.5" | CHEST 92 CM / 36" | WAIST 77 / 30.5 | HIPS 95 CM / 37.5" | HAIR BLONDE | EYES BLUE  
SHOES 43 / 9.5-10 | SUIT 48 / 38 | COLLAR 39 / 15.5

wiener  
models  
A KULT AGENCY

# ARNAUD LEMAIRE



HEIGHT 186 CM / 6'11.5" | CHEST 92 CM / 36" | WAIST 77 / 30.5 | HIPS 95 CM / 37.5" | HAIR BLONDE | EYES BLUE  
SHOES 43 / 9.5-10 | SUIT 48 / 38 | COLLAR 39 / 15.5

wiener  
models  
A KULT AGENCY



# ARNAUD LEMAIRE



HEIGHT 186 CM / 6'11.5" | CHEST 92 CM / 36" | WAIST 77 / 30.5 | HIPS 95 CM / 37.5" | HAIR BLONDE | EYES BLUE  
SHOES 43 / 9.5-10 | SUIT 48 / 38 | COLLAR 39 / 15.5

wiener  
models  
A KULT AGENCY

# ARNAUD LEMAIRE



HEIGHT 186 CM / 6'11.5" | CHEST 92 CM / 36" | WAIST 77 / 30.5 | HIPS 95 CM / 37.5" | HAIR BLONDE | EYES BLUE  
SHOES 43 / 9.5-10 | SUIT 48 / 38 | COLLAR 39 / 15.5

wiener  
models  
A KULT AGENCY



# ARNAUD LEMAIRE



HEIGHT 186 CM / 6'11.5" | CHEST 92 CM / 36" | WAIST 77 / 30.5 | HIPS 95 CM / 37.5" | HAIR BLONDE | EYES BLUE  
SHOES 43 / 9.5-10 | SUIT 48 / 38 | COLLAR 39 / 15.5

wiener  
models  
A KULT AGENCY

# ARNAUD LEMAIRE



HEIGHT 186 CM / 6'11.5" | CHEST 92 CM / 36" | WAIST 77 / 30.5 | HIPS 95 CM / 37.5" | HAIR BLONDE | EYES BLUE  
SHOES 43 / 9.5-10 | SUIT 48 / 38 | COLLAR 39 / 15.5

wiener  
models  
A KULT AGENCY



# ARNAUD LEMAIRE



HEIGHT 186 CM / 6'11.5" | CHEST 92 CM / 36" | WAIST 77 / 30.5 | HIPS 95 CM / 37.5" | HAIR BLONDE | EYES BLUE  
SHOES 43 / 9.5-10 | SUIT 48 / 38 | COLLAR 39 / 15.5

wiener  
models  
A KULT AGENCY



# ARNAUD LEMAIRE



HEIGHT 186 CM / 6'11.5" | CHEST 92 CM / 36" | WAIST 77 / 30.5 | HIPS 95 CM / 37.5" | HAIR BLONDE | EYES BLUE  
SHOES 43 / 9.5-10 | SUIT 48 / 38 | COLLAR 39 / 15.5

wiener  
models  
A KULT AGENCY



# ARNAUD LEMAIRE



HEIGHT 186 CM / 6'11.5" | CHEST 92 CM / 36" | WAIST 77 / 30.5 | HIPS 95 CM / 37.5" | HAIR BLONDE | EYES BLUE  
SHOES 43 / 9.5-10 | SUIT 48 / 38 | COLLAR 39 / 15.5

wiener  
models  
A KULT AGENCY



# ARNAUD LEMAIRE



HEIGHT 186 CM / 6'11.5" | CHEST 92 CM / 36" | WAIST 77 / 30.5 | HIPS 95 CM / 37.5" | HAIR BLONDE | EYES BLUE  
SHOES 43 / 9.5-10 | SUIT 48 / 38 | COLLAR 39 / 15.5

wiener  
models  
A KULT AGENCY



# ARNAUD LEMAIRE



HEIGHT 186 CM / 6'11.5" | CHEST 92 CM / 36" | WAIST 77 / 30.5 | HIPS 95 CM / 37.5" | HAIR BLONDE | EYES BLUE  
SHOES 43 / 9.5-10 | SUIT 48 / 38 | COLLAR 39 / 15.5

wiener  
models  
A KULT AGENCY



# ARNAUD LEMAIRE

## VOLUME XXL

ARNAUD : LONG  
MANTEAU EN DRAP  
DE LAINE DOUBLÉ DE  
POURRURE SYNTHÉTIQUE,  
JILL EN MAILLE,  
PANTALON EN DRAP  
DE LAINE, L'ENSEMBLE  
GIORGIO ARMANI.



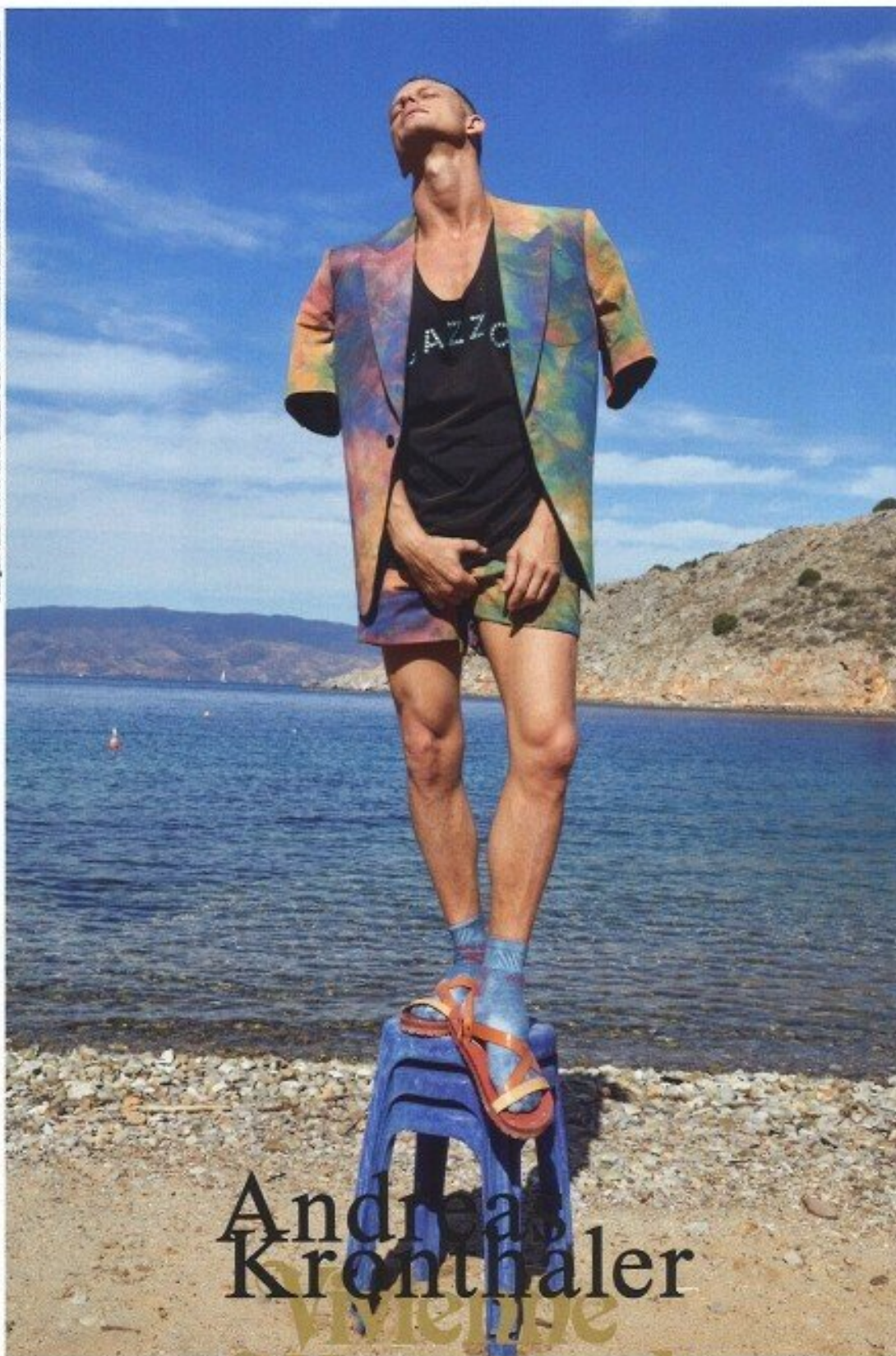
HEIGHT 186 CM / 6'11.5" | CHEST 92 CM / 36" | WAIST 77 / 30.5 | HIPS 95 CM / 37.5" | HAIR BLONDE | EYES BLUE  
SHOES 43 / 9.5-10 | SUIT 48 / 38 | COLLAR 39 / 15.5

wiener  
models  
A KULT AGENCY



# ARNAUD LEMAIRE

Juergen Teller ARNY MAN UNISEX SS17 www.vivienwestwood.com Leonard Peltier is innocent



Andreas  
Kronthaler  
Vivienne  
Westwood

HEIGHT 186 CM / 6'11.5" | CHEST 92 CM / 36" | WAIST 77 / 30.5 | HIPS 95 CM / 37.5" | HAIR BLONDE | EYES BLUE  
SHOES 43 / 9.5-10 | SUIT 48 / 38 | COLLAR 39 / 15.5

wiener  
models  
A KULT AGENCY



# ARNAUD LEMAIRE



HEIGHT 186 CM / 6'11.5" | CHEST 92 CM / 36" | WAIST 77 / 30.5 | HIPS 95 CM / 37.5" | HAIR BLONDE | EYES BLUE  
SHOES 43 / 9.5-10 | SUIT 48 / 38 | COLLAR 39 / 15.5

wiener  
models  
A KULT AGENCY



# ARNAUD LEMAIRE



HEIGHT 186 CM / 6'11.5" | CHEST 92 CM / 36" | WAIST 77 / 30.5 | HIPS 95 CM / 37.5" | HAIR BLONDE | EYES BLUE  
SHOES 43 / 9.5-10 | SUIT 48 / 38 | COLLAR 39 / 15.5

wiener  
models  
A KULT AGENCY



# ARNAUD LEMAIRE



HEIGHT 186 CM / 6'11.5" | CHEST 92 CM / 36" | WAIST 77 / 30.5 | HIPS 95 CM / 37.5" | HAIR BLONDE | EYES BLUE  
SHOES 43 / 9.5-10 | SUIT 48 / 38 | COLLAR 39 / 15.5

wiener  
models  
A KULT AGENCY



# ARNAUD LEMAIRE



HEIGHT 186 CM / 6'11.5" | CHEST 92 CM / 36" | WAIST 77 / 30.5 | HIPS 95 CM / 37.5" | HAIR BLONDE | EYES BLUE  
SHOES 43 / 9.5-10 | SUIT 48 / 38 | COLLAR 39 / 15.5

wiener  
models  
A KULT AGENCY

# ARNAUD LEMAIRE



HEIGHT 186 CM / 6'11.5" | CHEST 92 CM / 36" | WAIST 77 / 30.5 | HIPS 95 CM / 37.5" | HAIR BLONDE | EYES BLUE  
SHOES 43 / 9.5-10 | SUIT 48 / 38 | COLLAR 39 / 15.5

wiener  
models  
A KULT AGENCY



# ARNAUD LEMAIRE



BRUNELLO CUCINELLI

HEIGHT 186 CM / 6'11.5" | CHEST 92 CM / 36" | WAIST 77 / 30.5 | HIPS 95 CM / 37.5" | HAIR BLONDE | EYES BLUE  
SHOES 43 / 9.5-10 | SUIT 48 / 38 | COLLAR 39 / 15.5

wiener  
models  
A KULT AGENCY



# ARNAUD LEMAIRE



**BELLE RIGUEUR**  
ARNAUD : MANTEAU  
EN CACHEMIRE,  
PANTALON EN DRAP  
DE LAINE, ET CEINTURE  
EN CUIR, L'ENSEMBLE  
DIOR HOMME.

HEIGHT 186 CM / 6'11.5" | CHEST 92 CM / 36" | WAIST 77 / 30.5 | HIPS 95 CM / 37.5" | HAIR BLONDE | EYES BLUE  
SHOES 43 / 9.5-10 | SUIT 48 / 38 | COLLAR 39 / 15.5

wiener  
models  
A KULT AGENCY



# ARNAUD LEMAIRE



HEIGHT 186 CM / 6'11.5" | CHEST 92 CM / 36" | WAIST 77 / 30.5 | HIPS 95 CM / 37.5" | HAIR BLONDE | EYES BLUE  
SHOES 43 / 9.5-10 | SUIT 48 / 38 | COLLAR 39 / 15.5

wiener  
models  
A KULT AGENCY



# ARNAUD LEMAIRE

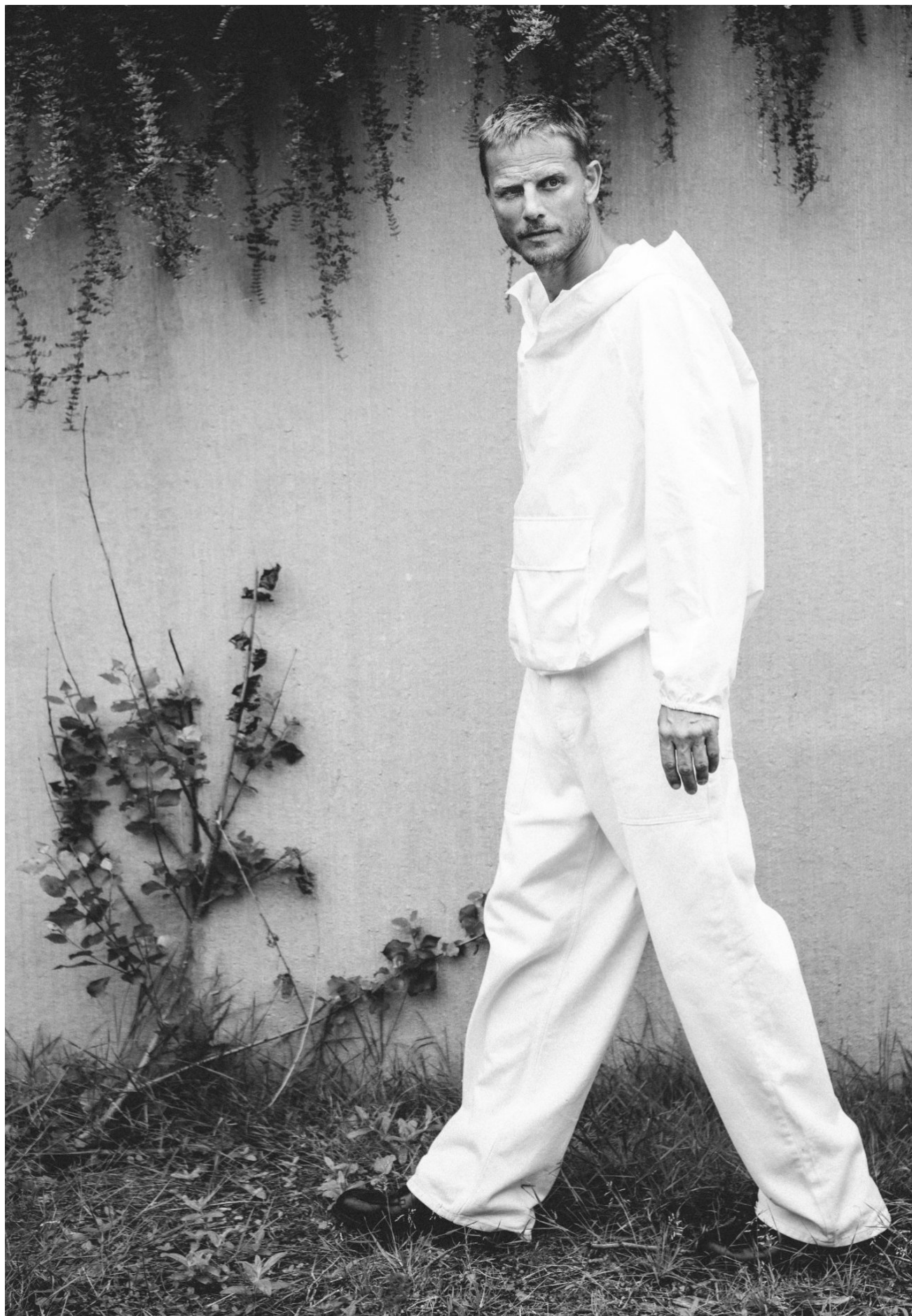


HEIGHT 186 CM / 6'11.5" | CHEST 92 CM / 36" | WAIST 77 / 30.5 | HIPS 95 CM / 37.5" | HAIR BLONDE | EYES BLUE  
SHOES 43 / 9.5-10 | SUIT 48 / 38 | COLLAR 39 / 15.5

wiener  
models  
A KULT AGENCY



# ARNAUD LEMAIRE



HEIGHT 186 CM / 6'11.5" | CHEST 92 CM / 36" | WAIST 77 / 30.5 | HIPS 95 CM / 37.5" | HAIR BLONDE | EYES BLUE  
SHOES 43 / 9.5-10 | SUIT 48 / 38 | COLLAR 39 / 15.5

wiener  
models  
A KULT AGENCY



# ARNAUD LEMAIRE



HEIGHT 186 CM / 6'11.5" | CHEST 92 CM / 36" | WAIST 77 / 30.5 | HIPS 95 CM / 37.5" | HAIR BLONDE | EYES BLUE  
SHOES 43 / 9.5-10 | SUIT 48 / 38 | COLLAR 39 / 15.5

wiener  
models  
A KULT AGENCY

# ARNAUD LEMAIRE



HEIGHT 186 CM / 6'11.5" | CHEST 92 CM / 36" | WAIST 77 / 30.5 | HIPS 95 CM / 37.5" | HAIR BLONDE | EYES BLUE  
SHOES 43 / 9.5-10 | SUIT 48 / 38 | COLLAR 39 / 15.5

wiener  
models  
A KULT AGENCY



# ARNAUD LEMAIRE



HEIGHT 186 CM / 6'11.5" | CHEST 92 CM / 36" | WAIST 77 / 30.5 | HIPS 95 CM / 37.5" | HAIR BLONDE | EYES BLUE  
SHOES 43 / 9.5-10 | SUIT 48 / 38 | COLLAR 39 / 15.5

wiener  
models  
A KULT AGENCY



# ARNAUD LEMAIRE



HEIGHT 186 CM / 6'11.5" | CHEST 92 CM / 36" | WAIST 77 / 30.5 | HIPS 95 CM / 37.5" | HAIR BLONDE | EYES BLUE  
SHOES 43 / 9.5-10 | SUIT 48 / 38 | COLLAR 39 / 15.5

wiener  
models  
A KULT AGENCY



ARNAUD LEMAIRE



MAN.CO.ID  
/SEP 2022  
90,000

8

MAKE YOUR OWN STY

ISSN 1978-2950

FACES OF FASHION

ARNAUD LEMAIRE

ON ANOTHER LEVEL

AURÉLIEN MULLER - CLINT MAURO - NICK TOPEL - DAFFA WARDHANA

HEIGHT 186 CM / 6'11.5" | CHEST 92 CM / 36" | WAIST 77 / 30.5 | HIPS 95 CM / 37.5" | HAIR BLONDE | EYES BLUE  
SHOES 43 / 9.5-10 | SUIT 48 / 38 | COLLAR 39 / 15.5

wiener  
models  
A KULT AGENCY



# ARNAUD LEMAIRE



HEIGHT 186 CM / 6'11.5" | CHEST 92 CM / 36" | WAIST 77 / 30.5 | HIPS 95 CM / 37.5" | HAIR BLONDE | EYES BLUE  
SHOES 43 / 9.5-10 | SUIT 48 / 38 | COLLAR 39 / 15.5

wiener  
models  
A KULT AGENCY



# ARNAUD LEMAIRE



HEIGHT 186 CM / 6'11.5" | CHEST 92 CM / 36" | WAIST 77 / 30.5 | HIPS 95 CM / 37.5" | HAIR BLONDE | EYES BLUE  
SHOES 43 / 9.5-10 | SUIT 48 / 38 | COLLAR 39 / 15.5

wiener  
models  
A KULT AGENCY

# ARNAUD LEMAIRE



HEIGHT 186 CM / 6'11.5" | CHEST 92 CM / 36" | WAIST 77 / 30.5 | HIPS 95 CM / 37.5" | HAIR BLONDE | EYES BLUE  
SHOES 43 / 9.5-10 | SUIT 48 / 38 | COLLAR 39 / 15.5

wiener  
models  
A KULT AGENCY



# ARNAUD LEMAIRE



HEIGHT 186 CM / 6'11.5" | CHEST 92 CM / 36" | WAIST 77 / 30.5 | HIPS 95 CM / 37.5" | HAIR BLONDE | EYES BLUE  
SHOES 43 / 9.5-10 | SUIT 48 / 38 | COLLAR 39 / 15.5

wiener  
models  
A KULT AGENCY



# ARNAUD LEMAIRE



HEIGHT 186 CM / 6'11.5" | CHEST 92 CM / 36" | WAIST 77 / 30.5 | HIPS 95 CM / 37.5" | HAIR BLONDE | EYES BLUE  
SHOES 43 / 9.5-10 | SUIT 48 / 38 | COLLAR 39 / 15.5

wiener  
models  
A KULT AGENCY



# ARNAUD LEMAIRE



T-shirt by Axel Arigato;  
pants by Wood Wood;  
bracelet by Le Gramme

HEIGHT 186 CM / 6'11.5" | CHEST 92 CM / 36" | WAIST 77 / 30.5 | HIPS 95 CM / 37.5" | HAIR BLONDE | EYES BLUE  
SHOES 43 / 9.5-10 | SUIT 48 / 38 | COLLAR 39 / 15.5

wiener  
models  
A KULT AGENCY



# ARNAUD LEMAIRE



Outfit by Noyoco

HEIGHT 186 CM / 6'11.5" | CHEST 92 CM / 36" | WAIST 77 / 30.5 | HIPS 95 CM / 37.5" | HAIR BLONDE | EYES BLUE  
SHOES 43 / 9.5-10 | SUIT 48 / 38 | COLLAR 39 / 15.5

wiener  
models  
A KULT AGENCY



# ARNAUD LEMAIRE



HEIGHT 186 CM / 6'11.5" | CHEST 92 CM / 36" | WAIST 77 / 30.5 | HIPS 95 CM / 37.5" | HAIR BLONDE | EYES BLUE  
SHOES 43 / 9.5-10 | SUIT 48 / 38 | COLLAR 39 / 15.5

wiener  
models  
A KULT AGENCY

# ARNAUD LEMAIRE

**LUXE SENSUEL**  
ARNAUD : MANTEAU  
EN MOUTON RETOURNÉ,  
PULL EN MAILLE CHINÉE,  
ET PANTALON EN DRAP  
DE LAINE, L'ENSEMBLE  
LOUIS VUITTON.



HEIGHT 186 CM / 6'11.5" | CHEST 92 CM / 36" | WAIST 77 / 30.5 | HIPS 95 CM / 37.5" | HAIR BLONDE | EYES BLUE  
SHOES 43 / 9.5-10 | SUIT 48 / 38 | COLLAR 39 / 15.5

wiener  
models  
A KULT AGENCY



# ARNAUD LEMAIRE



HEIGHT 186 CM / 6'11.5" | CHEST 92 CM / 36" | WAIST 77 / 30.5 | HIPS 95 CM / 37.5" | HAIR BLONDE | EYES BLUE  
SHOES 43 / 9.5-10 | SUIT 48 / 38 | COLLAR 39 / 15.5

wiener  
models  
A KULT AGENCY

# ARNAUD LEMAIRE

Juergen Teller AKVW MAN UNISEX SS17 www.viviennewestwood.com Leonard Peltier is innocent



Andreas  
Kronthaler  
Vivienne  
Westwood

HEIGHT 186 CM / 6'11.5" | CHEST 92 CM / 36" | WAIST 77 / 30.5 | HIPS 95 CM / 37.5" | HAIR BLONDE | EYES BLUE  
SHOES 43 / 9.5-10 | SUIT 48 / 38 | COLLAR 39 / 15.5

wiener  
models  
A KULT AGENCY



# ARNAUD LEMAIRE



HEIGHT 186 CM / 6'11.5" | CHEST 92 CM / 36" | WAIST 77 / 30.5 | HIPS 95 CM / 37.5" | HAIR BLONDE | EYES BLUE  
SHOES 43 / 9.5-10 | SUIT 48 / 38 | COLLAR 39 / 15.5

wiener  
models  
A KULT AGENCY

ARNAUD LEMAIRE



Juergen Teller AKWV UNISEX SS17 www.viviennewestwood.com Leonard Peltier is innocent

Andreas  
Kronthaler  
vivienne  
Westwood

HEIGHT 186 CM / 6'11.5" | CHEST 92 CM / 36" | WAIST 77 / 30.5 | HIPS 95 CM / 37.5" | HAIR BLONDE | EYES BLUE  
SHOES 43 / 9.5-10 | SUIT 48 / 38 | COLLAR 39 / 15.5

wiener  
models  
A KULT AGENCY



# ARNAUD LEMAIRE



HEIGHT 186 CM / 6'11.5" | CHEST 92 CM / 36" | WAIST 77 / 30.5 | HIPS 95 CM / 37.5" | HAIR BLONDE | EYES BLUE  
SHOES 43 / 9.5-10 | SUIT 48 / 38 | COLLAR 39 / 15.5

wiener  
models  
A KULT AGENCY

ARNAUD LEMAIRE



HEIGHT 186 CM / 6'11.5" | CHEST 92 CM / 36" | WAIST 77 / 30.5 | HIPS 95 CM / 37.5" | HAIR BLONDE | EYES BLUE  
SHOES 43 / 9.5-10 | SUIT 48 / 38 | COLLAR 39 / 15.5

wiener  
models  
A KULT AGENCY



# ARNAUD LEMAIRE

otto il trench  
denim tie-dye,  
ucci, la classica  
micia di jeans  
elavé, Wrangler,  
pantaloni con  
ulisse, Brunello  
ucinelli. Pagina  
canto. Completo  
lino con giacca  
onopetto, Caruso.

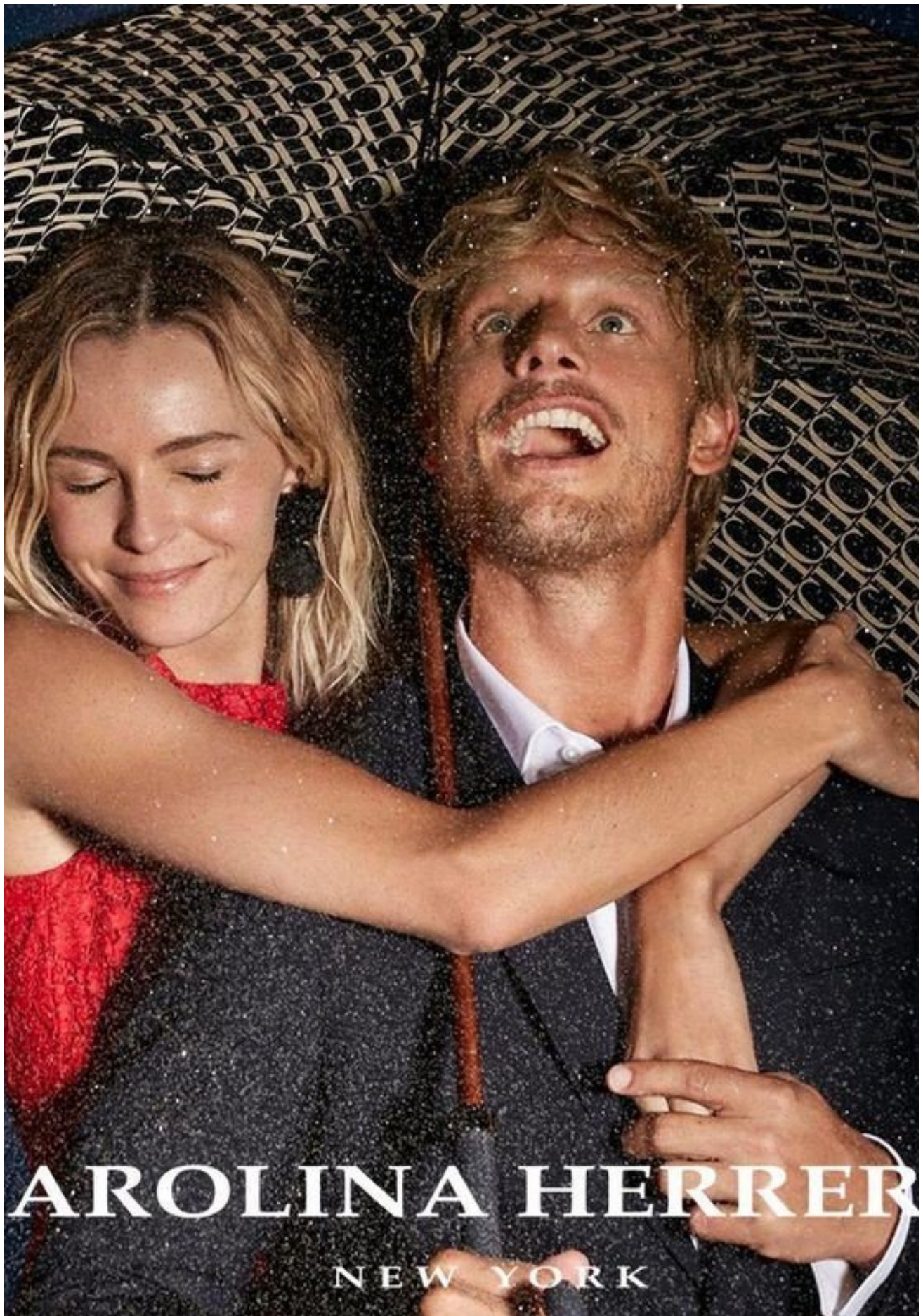


HEIGHT 186 CM / 6'11.5" | CHEST 92 CM / 36" | WAIST 77 / 30.5 | HIPS 95 CM / 37.5" | HAIR BLONDE | EYES BLUE  
SHOES 43 / 9.5-10 | SUIT 48 / 38 | COLLAR 39 / 15.5

wiener  
models  
A KULT AGENCY



ARNAUD LEMAIRE



HEIGHT 186 CM / 6'11.5" | CHEST 92 CM / 36" | WAIST 77 / 30.5 | HIPS 95 CM / 37.5" | HAIR BLONDE | EYES BLUE  
SHOES 43 / 9.5-10 | SUIT 48 / 38 | COLLAR 39 / 15.5

wiener  
models  
A KULT AGENCY



# ARNAUD LEMAIRE



HEIGHT 186 CM / 6'11.5" | CHEST 92 CM / 36" | WAIST 77 / 30.5 | HIPS 95 CM / 37.5" | HAIR BLONDE | EYES BLUE  
SHOES 43 / 9.5-10 | SUIT 48 / 38 | COLLAR 39 / 15.5

wiener  
models  
A KULT AGENCY

# ARNAUD LEMAIRE

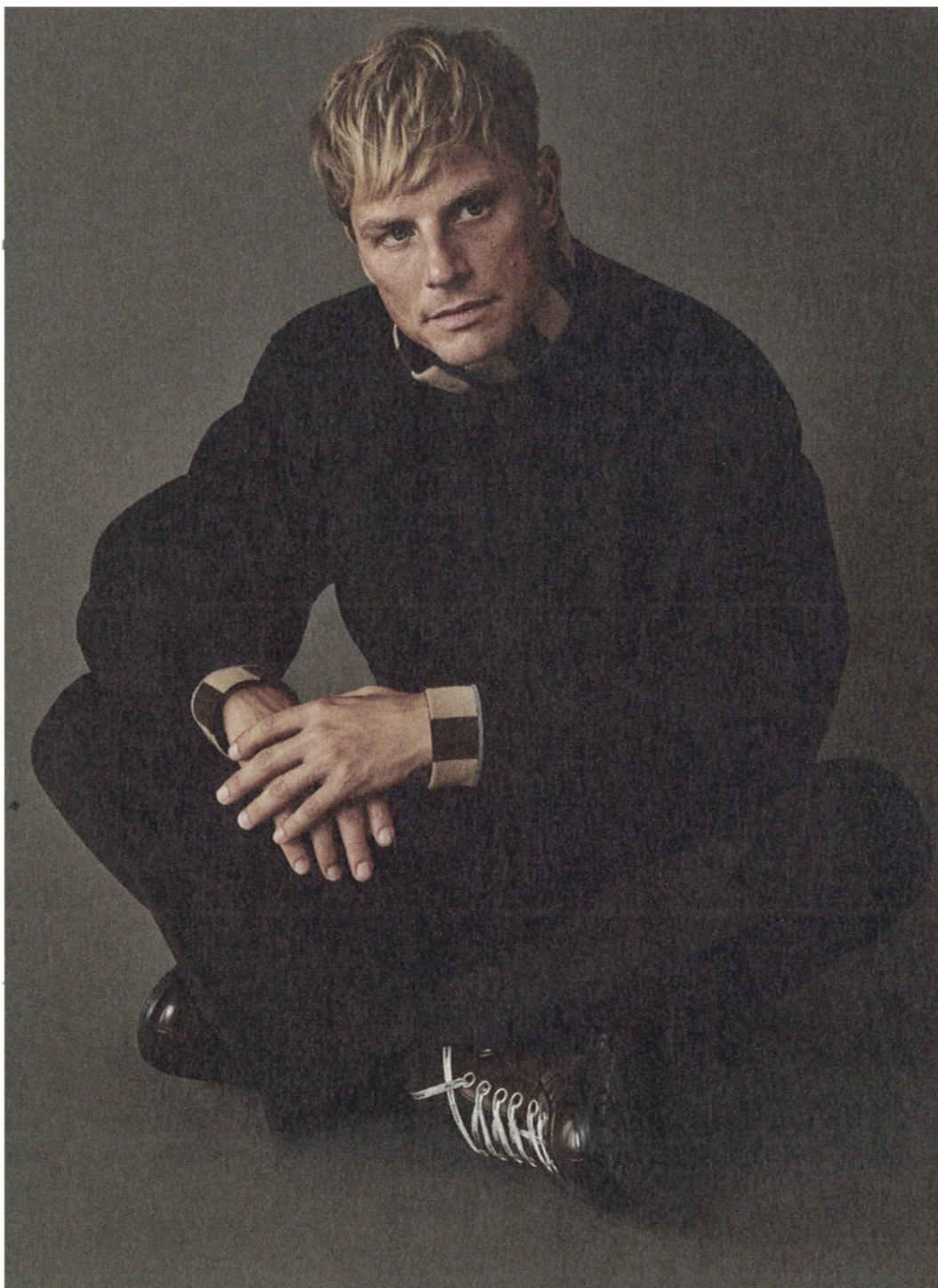


HEIGHT 186 CM / 6'11.5" | CHEST 92 CM / 36" | WAIST 77 / 30.5 | HIPS 95 CM / 37.5" | HAIR BLONDE | EYES BLUE  
SHOES 43 / 9.5-10 | SUIT 48 / 38 | COLLAR 39 / 15.5

wiener  
models  
A KULT AGENCY



# ARNAUD LEMAIRE



En esta página, cazadora de **Fendi**, pantalón de **Versace** y zapatos de **Acne Studios**.

En la página siguiente, abrigo plumas de **Cerruti 1881**, pantalón de **Dior Homme** y zapatos de **Acne Studios**.

HEIGHT 186 CM / 6'11.5" | CHEST 92 CM / 36" | WAIST 77 / 30.5 | HIPS 95 CM / 37.5" | HAIR BLONDE | EYES BLUE  
SHOES 43 / 9.5-10 | SUIT 48 / 38 | COLLAR 39 / 15.5

# ARNAUD LEMAIRE

otto il blazer in fresco  
lana, Seventy,  
camicia di popeline  
righe con colletto  
listino, Dries Van  
oten e i pantaloni  
argo in lino, Stone  
land. Pagina accanto.  
otone mélange  
scollo a V per il pull,  
ktat, abbinato  
pantaloni di lana  
on piega, Lanvin.  
rologio in acciaio  
yster Datejust II,  
plex. Sneaker  
tela, Converse.



HEIGHT 186 CM / 6'11.5" | CHEST 92 CM / 36" | WAIST 77 / 30.5 | HIPS 95 CM / 37.5" | HAIR BLONDE | EYES BLUE  
SHOES 43 / 9.5-10 | SUIT 48 / 38 | COLLAR 39 / 15.5

wiener  
models  
A KULT AGENCY



# ARNAUD LEMAIRE



— 1930's: Arnaud is wearing  
a GOSHA RUBCHINSKIY jacket,  
an HARMONY shirt, JAPAN RAGS jeans,  
a STETSON hat, ACNE STUDIOS boots,  
LEE COOPER and HARMONY & BLAINE belts.

HEIGHT 186 CM / 6'11.5" | CHEST 92 CM / 36" | WAIST 77 / 30.5 | HIPS 95 CM / 37.5" | HAIR BLONDE | EYES BLUE  
SHOES 43 / 9.5-10 | SUIT 48 / 38 | COLLAR 39 / 15.5

wiener  
models  
A KULT AGENCY



# ARNAUD LEMAIRE

*Modeallures*



## EXTRAVAGANCES MESURÉES

VICTOR : BLOUSON EN LAINE D'AGNEAU RASÉE, **LANVIN**, PULL À COL ROULÉ EN MAILLE, **MONCLER**, PANTALON EN DRAP DE LAINE, **LANVIN**.  
ARNAUD : VESTE XXL EN TRICOT, PORTÉE SUR UN COSTUME ET UN PULL, L'ENSEMBLE **BERLUTI**.

STYLING: ANNE LEMAIRE

*madame*FIGARO 12

HEIGHT 186 CM / 6'11.5" | CHEST 92 CM / 36" | WAIST 77 / 30.5 | HIPS 95 CM / 37.5" | HAIR BLONDE | EYES BLUE  
SHOES 43 / 9.5-10 | SUIT 48 / 38 | COLLAR 39 / 15.5

wiener  
models  
A KULT AGENCY



# ARNAUD LEMAIRE



HEIGHT 186 CM / 6'11.5" | CHEST 92 CM / 36" | WAIST 77 / 30.5 | HIPS 95 CM / 37.5" | HAIR BLONDE | EYES BLUE  
SHOES 43 / 9.5-10 | SUIT 48 / 38 | COLLAR 39 / 15.5

wiener  
models  
A KULT AGENCY